

Recombinant Yeast SUMO Protease, His tagged

Cat. No. SUMO Protease-016Y Lot. No. (See product label)

SPECIFICATION

| | |
|-------------------------|--|
| Product Overview | Yeast protein overexpressed in E. coli with histidine (His) tag |
| Species | Yeast |
| Source | E. coli |
| Description | The SUMO protease releases target proteins from Im7 resin. This protease recognizes SUMO tertiary structure-not a specific amino acid sequence-to cleave and release the target protein from the Im7-bound CL7 tag. SUMOP cleaves after the C-terminal glycine at the end of the SUMO sequence. If the target protein is fused downstream of the SUMO C-terminus, SUMOP cleavage renders the native protein sequence without any additional amino acids. |
| Purity | ~100% (SDS gel analysis) |
| Stability | 6 months from receipt when stored as directed |
| Storage | At -80 centigrade long term or -20 centigrade for 2-3 months. |
| Storage Buffer | 15 mM Tris (pH 8.0), 0.2 M NaCl, 50% glycerol |
| Concentration | ~7.5 mg/mL |
| Shipping | Dry ice |

 Tel: 1-631-559-9269 1-516-512-3133

 Email: info@creative-biomart.com  Fax: 1-631-938-8127

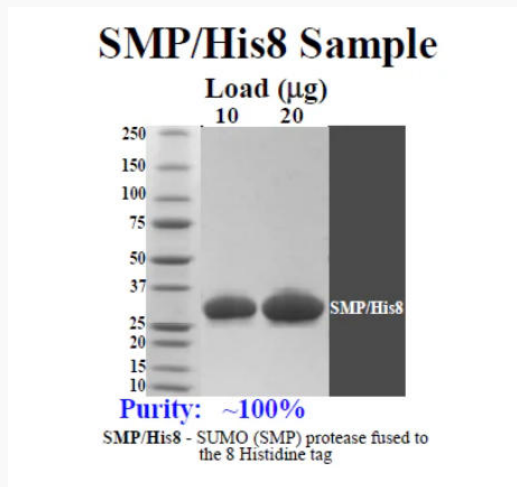
 45-1 Ramsey Road, Shirley, NY 11967, USA

GENE INFORMATION

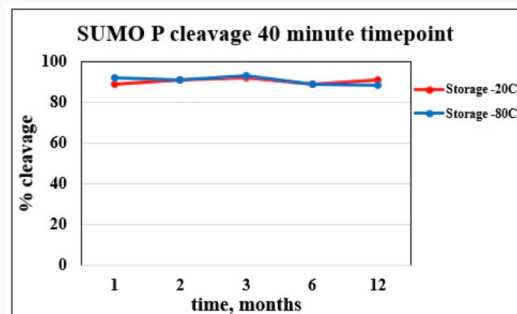
Official Symbol SUMO Protease

Synonyms SUMO Protease

SDS-PAGE and WB



Activity



Tel: 1-631-559-9269 1-516-512-3133

Email: info@creative-biomart.com Fax: 1-631-938-8127

45-1 Ramsey Road, Shirley, NY 11967, USA